

## Signing of Native Title Mining Agreement – Central Gawler Craton

---

- **Native Title Mining Agreement (NTMA) signed with the Antakirinja Matu-Yankunytjatjara Aboriginal Corporation**
  - **NTMA covers 16 Exploration Licences within the Lake Labyrinth Shear Zone (LLSZ)**
  - **LLSZ hosts several high priority targets including Ariadne, Partridge, Company Well, North Hicks and Minos**
  - **Paves the way for expanded exploration programmes to be undertaken across Indiana’s 5,090 km<sup>2</sup> Central Gawler Craton Gold Project in South Australia**
  - **Drilling to commence shortly at Minos to follow up high grade gold intersected in last drill programme**
  - **Expanded exploration planned to test several additional targets along the 30km strike within the LLSZ**
- 

Indiana Resources Limited (ASX: IDA) (**‘Indiana’** or the **‘Company’**) is pleased to announce that it has signed a Native Title Mining Agreement (**“NTMA”**) with the Antakirinja Matu-Yankunytjatjara Aboriginal Corporation (**“AMYAC”**), allowing exploration to commence at several high priority targets within Indiana’s 100% owned 5,090 km<sup>2</sup> Central Gawler Craton Gold Project in South Australia.

The NTMA covers a total of 16 Exploration Licences that include the majority of the Lake Labyrinth Shear Zone (**“LLSZ”**) (see Figure 1). The LLSZ hosts several high priority exploration targets including Ariadne, Partridge, Company Well and North Hicks along with the Minos prospect which has been the focus of recent exploration activity. Indiana has devised an expanded programme of reverse circulation (RC), diamond and aircore drilling due to commence shortly at the Minos prospect and will update the market when that commences.

The signing of the NTMA is a key milestone and allows the Company to progress discussions with AMYAC to obtain the necessary heritage clearances to allow for additional exploration activities to take place across the LLSZ. Discussions are also progressing well with two additional native title groups for NTMA’s to be signed across the remainder of Indiana’s tenement package.

### **Indiana’s Executive Chairman Bronwyn Barnes said:**

*“I would like to thank AMYAC for their support in executing the NTMA and look forward to working with them to undertake the required heritage clearances to facilitate exploration in this exciting mineral province. With over 30km of potential strike, the Lake Labyrinth Shear Zone has always been a major exploration focus for the Company, and we look forward to building on our initial exploration success at Minos as we expand our exploration footprint within the Gawler Craton.”*

## **Planned Exploration Activity**

Recent exploration activity at Minos has been conducted under an existing Indigenous Land Use Agreement. However, following the recent addition of new tenement applications in the area, Indiana deemed it appropriate to execute an NTMA to include all tenements within the AMYAC Native Title Determination area. This will streamline future work programmes and provide a single point of contact for all exploration activities.

Following the positive results from the Company's first drilling programme at Minos (see ASX release dated 3 March 2021), a follow-up exploration programme at Minos will commence shortly which will include:

- 3 diamond holes (2 diamond tails and one full diamond hole);
- A 2,000m RC drilling programme planned across 15 holes to follow-up on recent drilling results at Minos; and
- Approximately 3,600m of aircore drilling to be completed along strike of Minos.

Further details relating to these drill programmes will be released to the market on commencement of activities in the field.

## **Ends**

*This announcement is authorised for release to the market by the Chairman of Indiana Resources Limited with the authority from the Board of Directors.*

For further information, please contact:

**Bronwyn Barnes**  
**Executive Chairman**  
**T: +61 417 093 256**

**Aida Tabakovic**  
**Company Secretary**  
**T: +61 8 9481 0389**

To find out more, please visit [www.indianaresources.com.au](http://www.indianaresources.com.au)

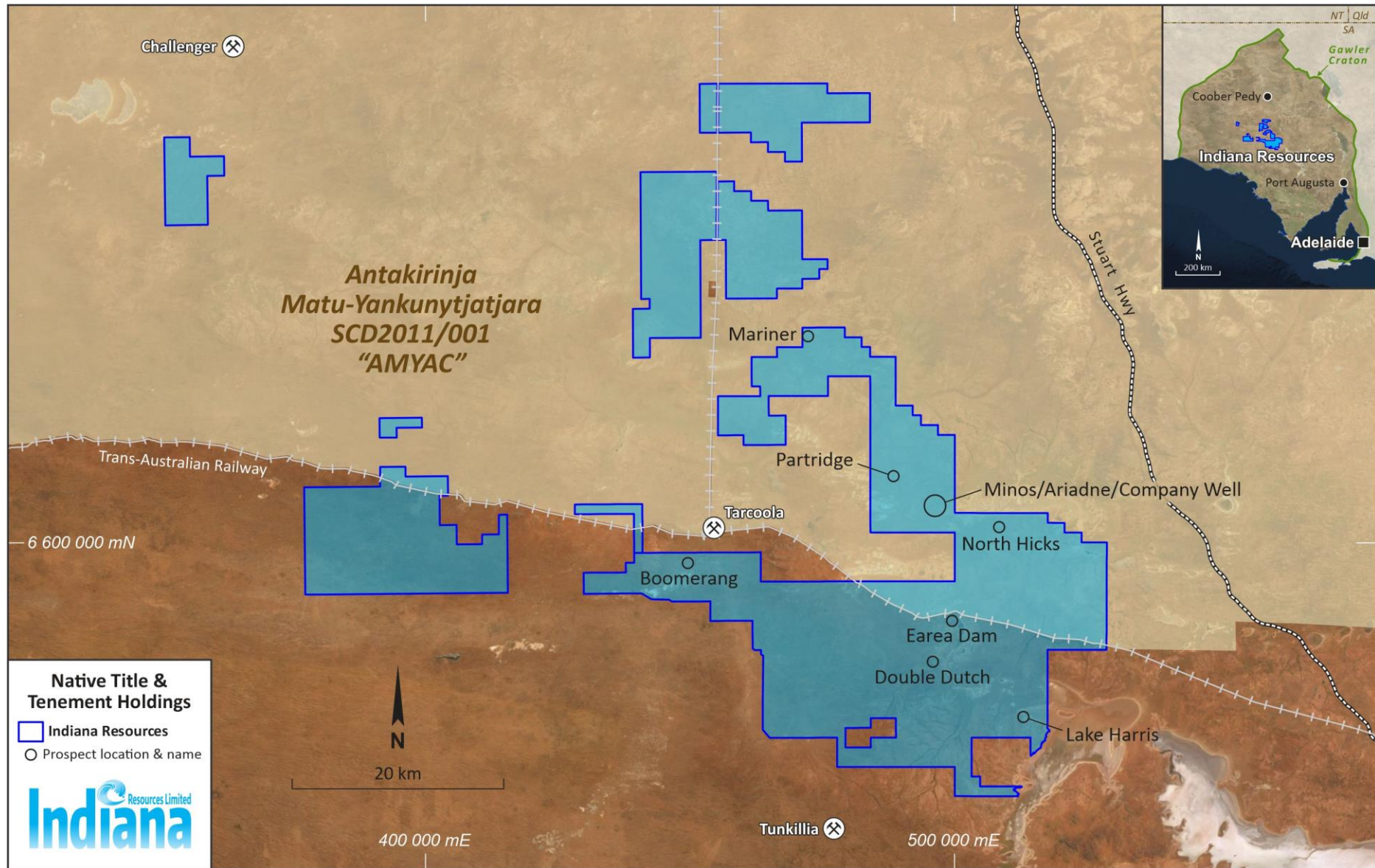


Figure 1: Location of Indiana Tenements within AMYAC Native Title area (AMYAC area – tan shaded area)